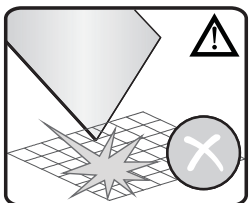
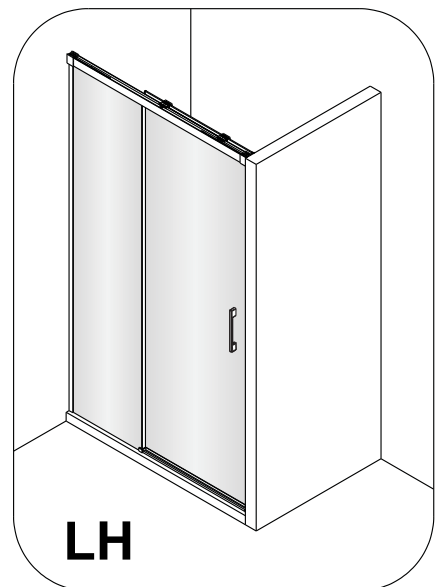
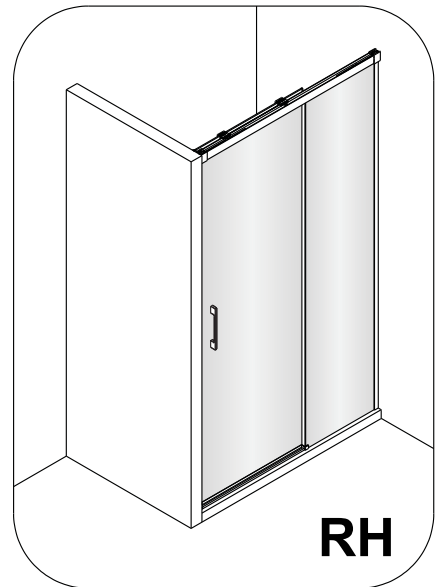
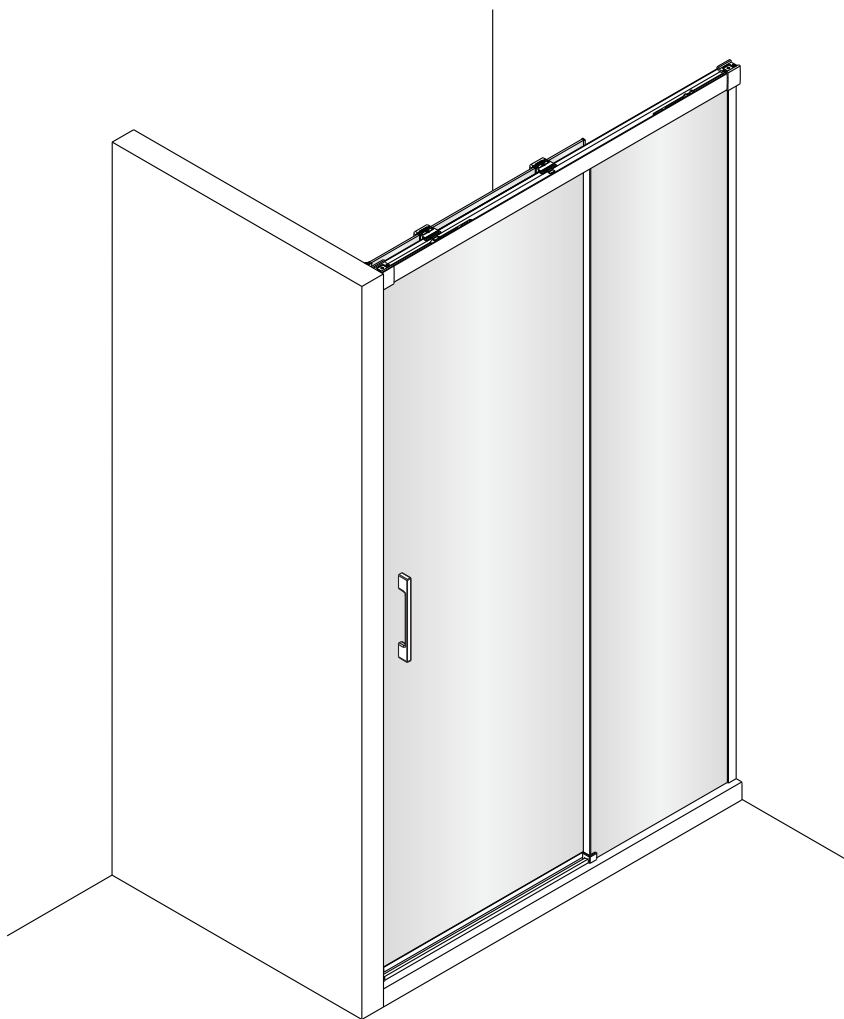


CSP11X / CSP12X / CSP13X / CSP14X / CSP16X / CSP17X

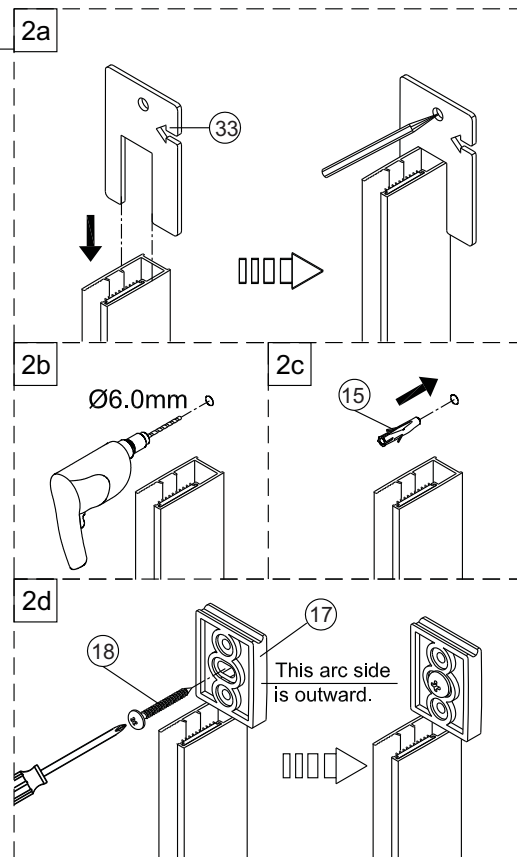
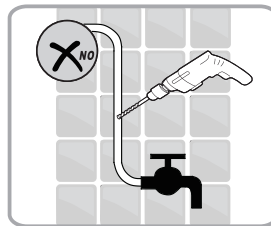
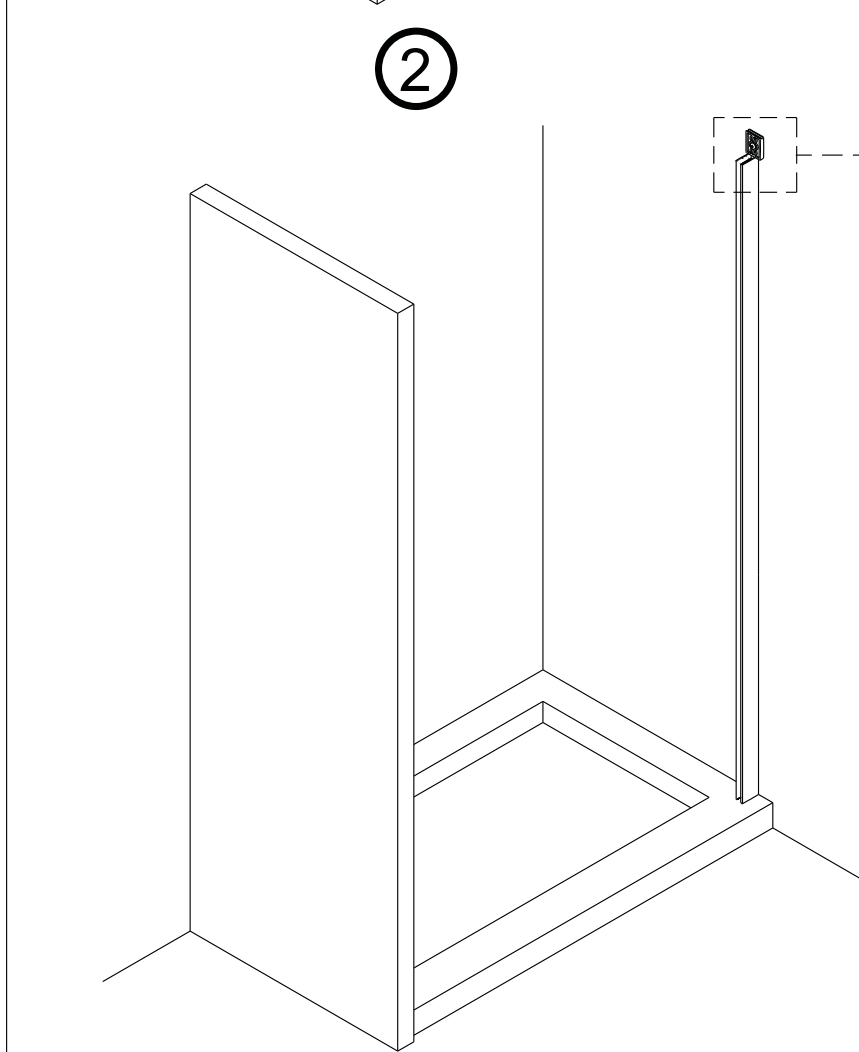
Instruction Manual



CAUTION! Tempered glass, handle with care!

No collision to the four corners in case of crazing.

Technical drawing showing a side view of a door hinge assembly. A hinge is mounted on the edge of a door. The distance from the corner of the door to the center of the hinge is labeled 'x'. The thickness of the door edge is indicated as 20mm.





This side with easy clean treatment, please put this side to inside of shower enclosure.

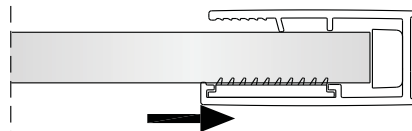
③

The setting wedge(No.31) will be needed if the door is not level in 2-7mm.

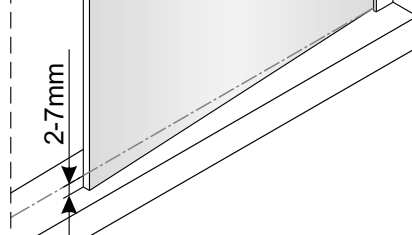
Overlap the two wedges (No.31) as per actual situation and place them under the door to level the door.

2-7mm

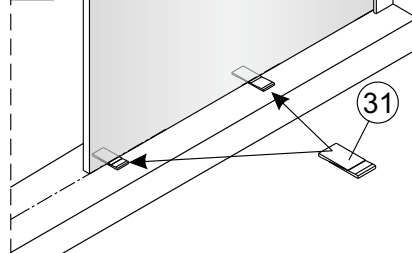
3a



3b

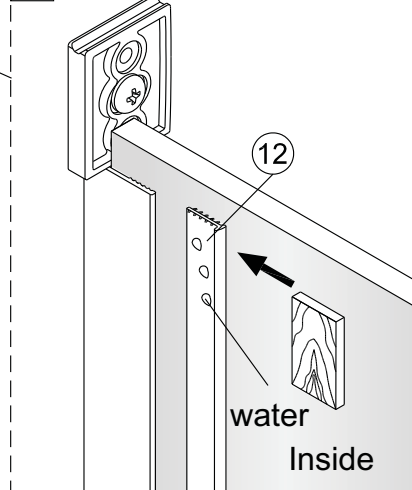


3c

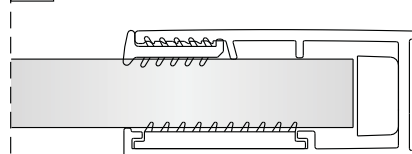


④

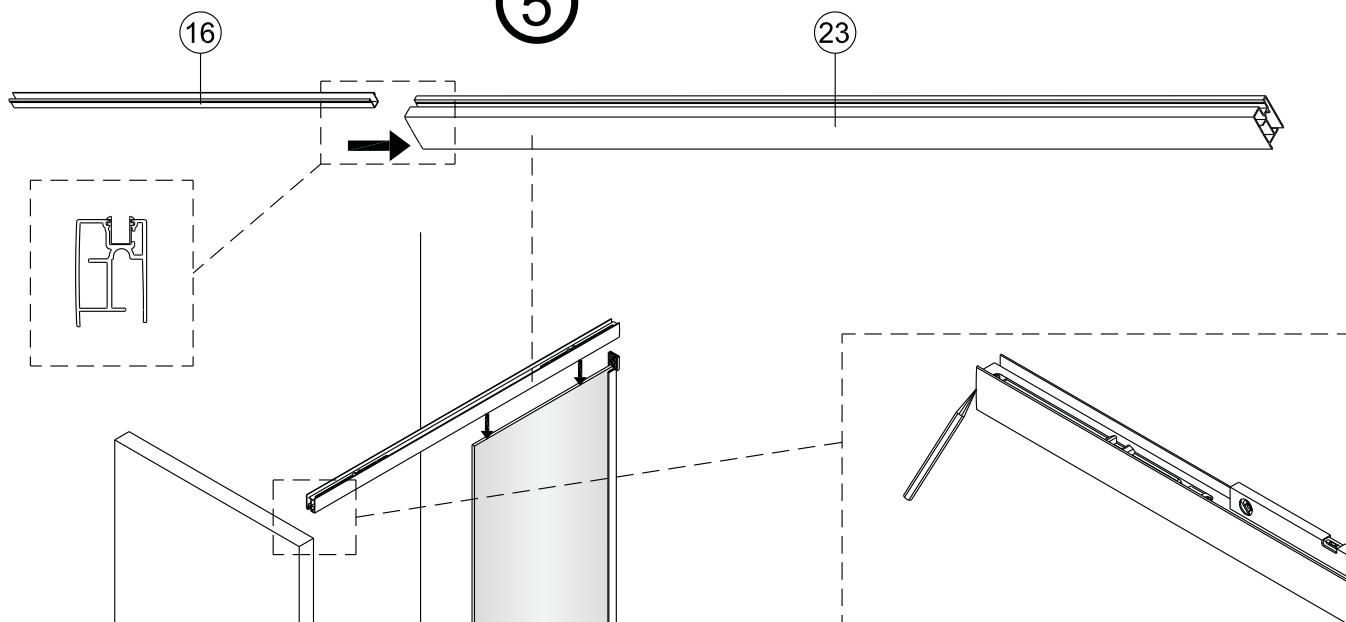
4a



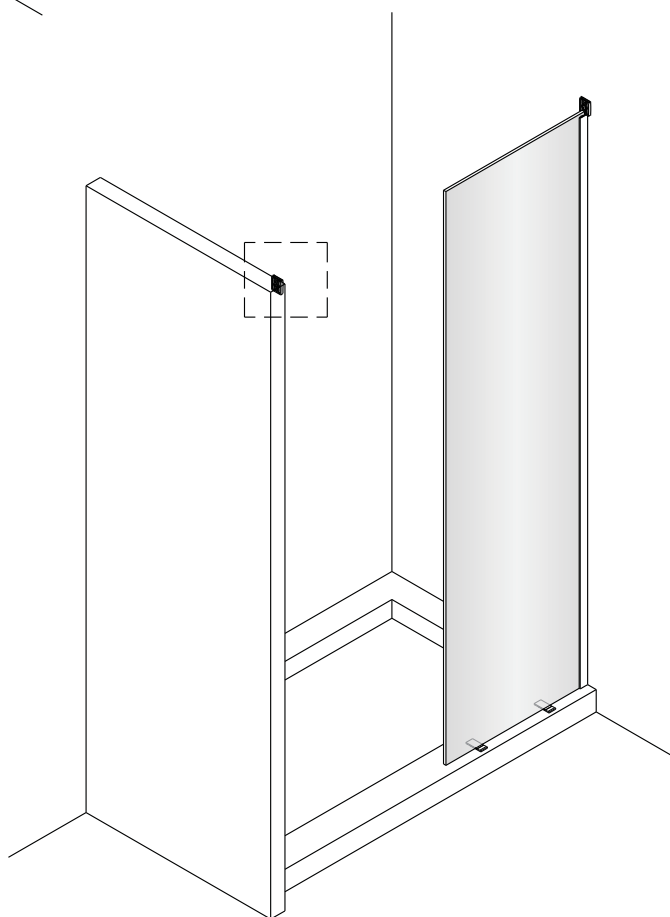
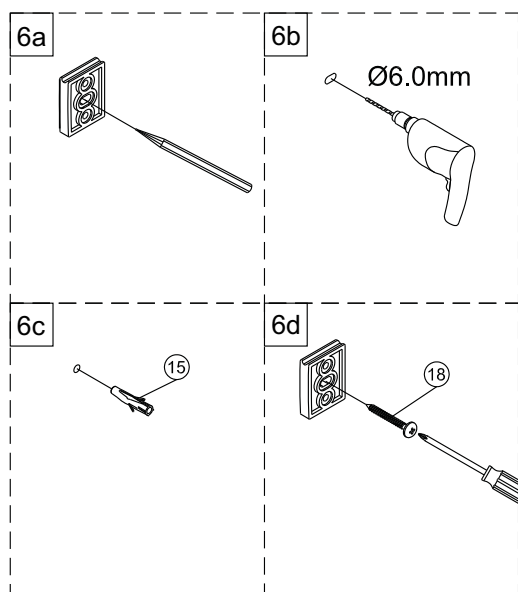
4b

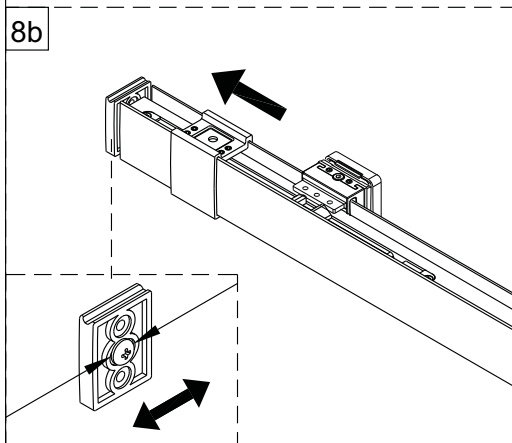
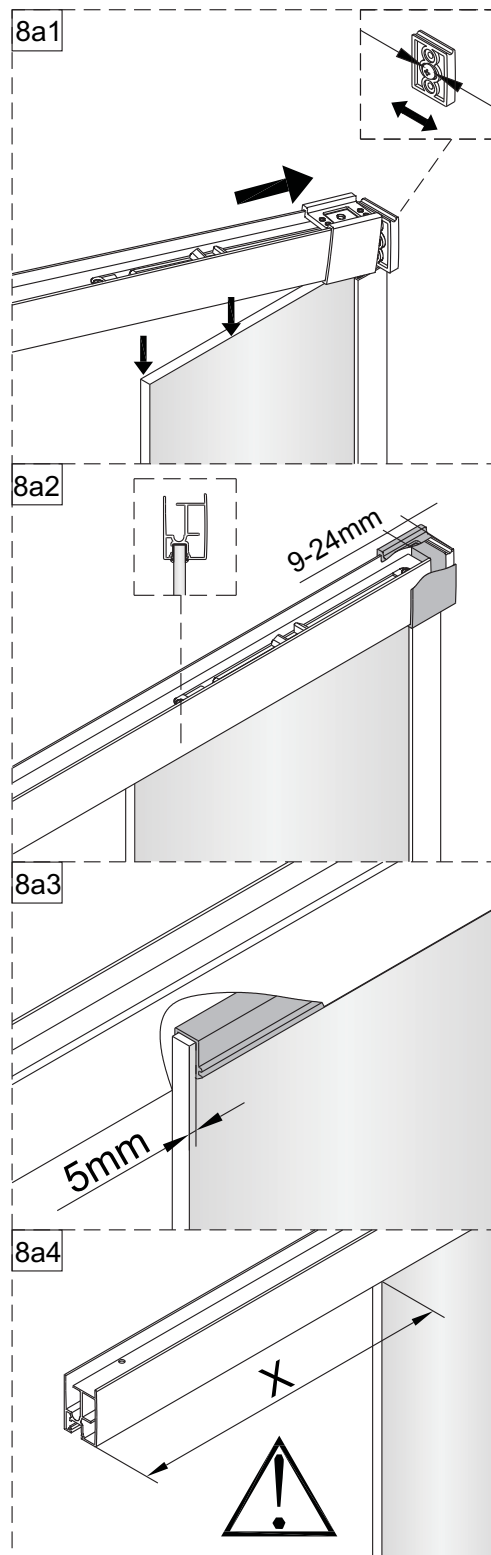
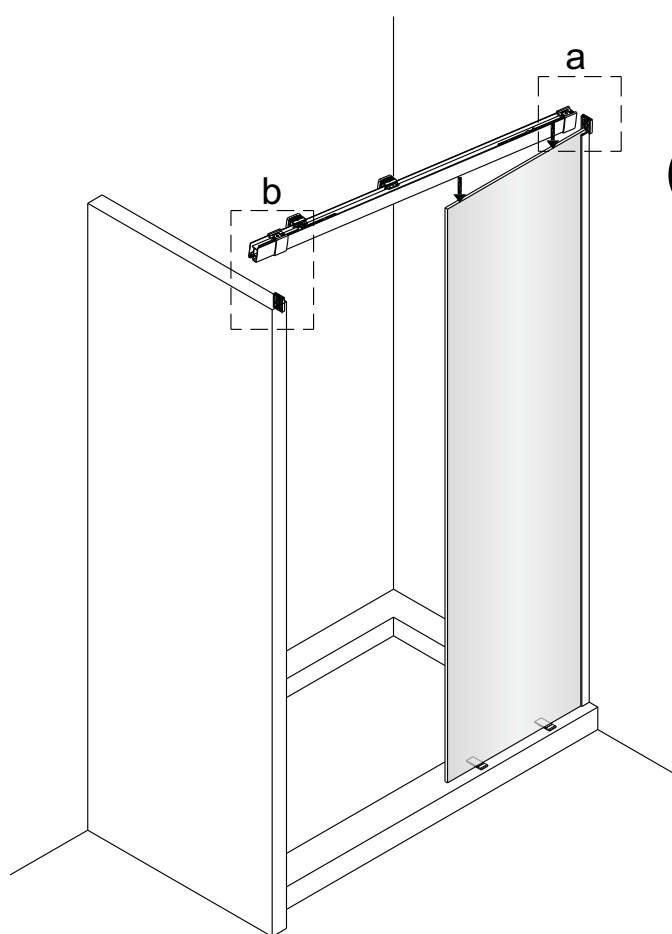
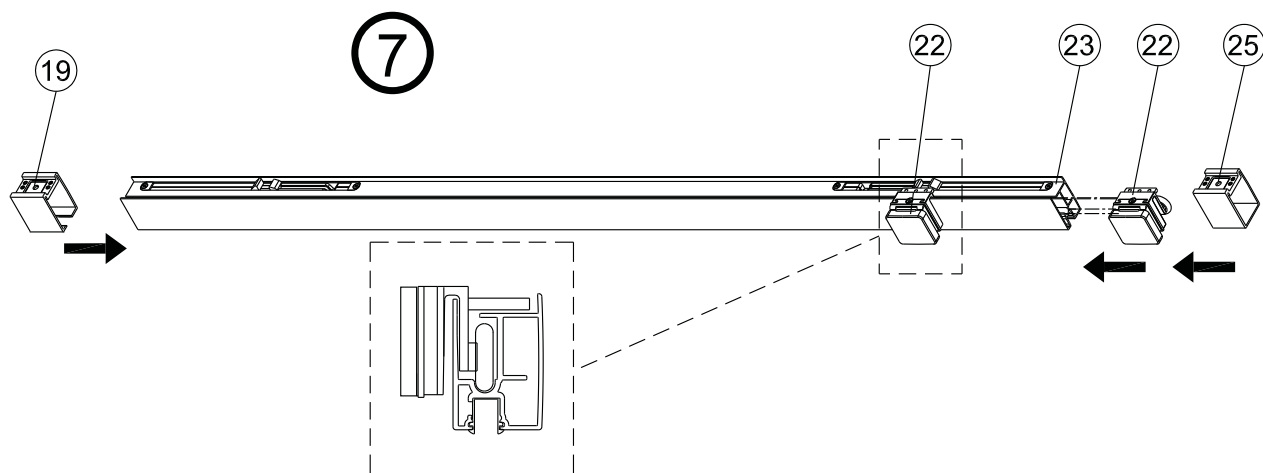


5



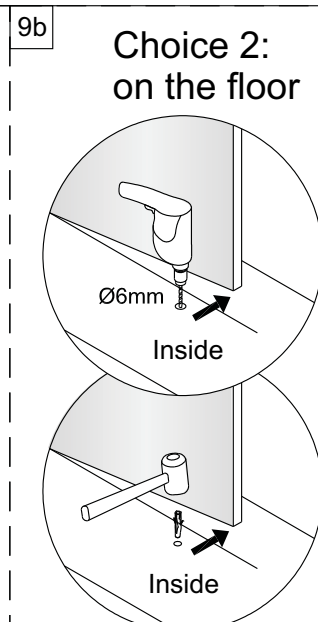
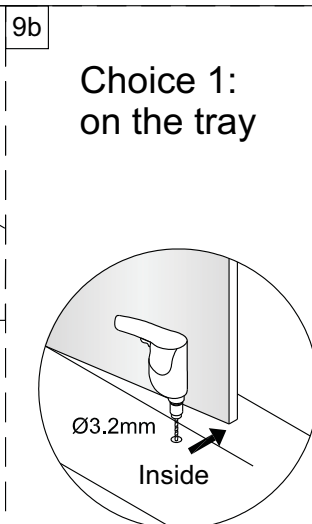
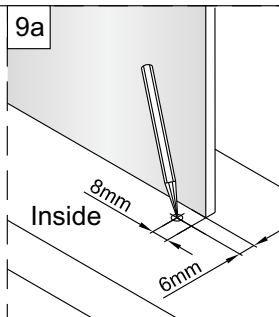
6



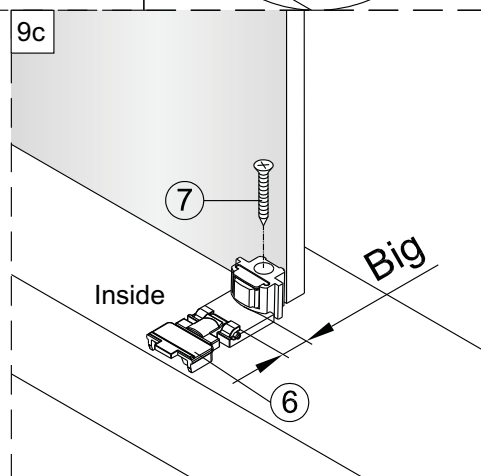


Ref.	X (mm)
1100	522
1200	572
1300	622
1400	672
1600	772
1700	822

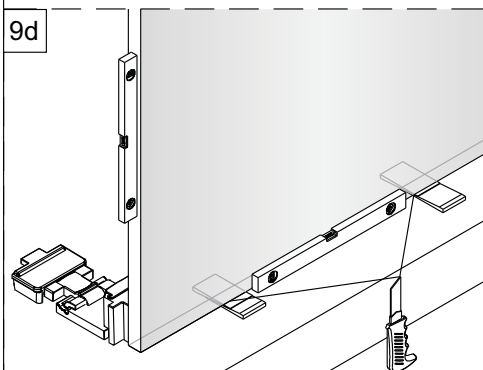
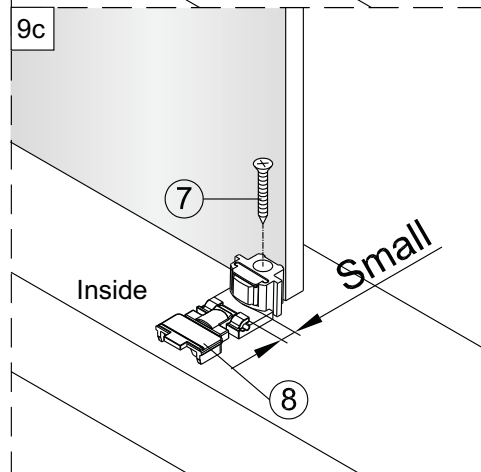
9



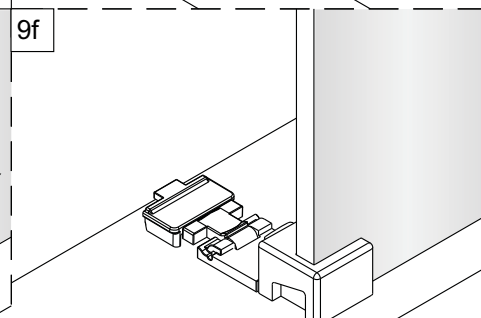
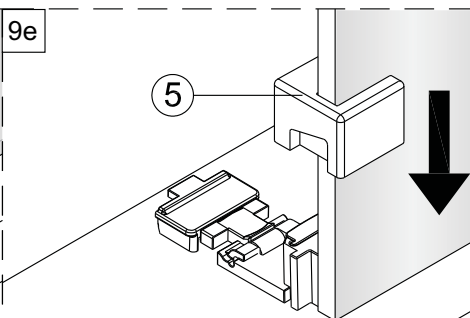
Step a: Insert the "Big" protector into the door guide when the moving glass use bottom waterproof strip.



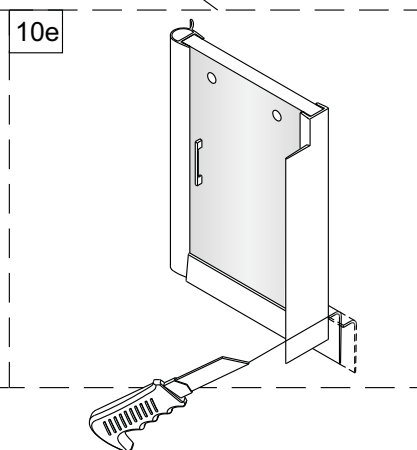
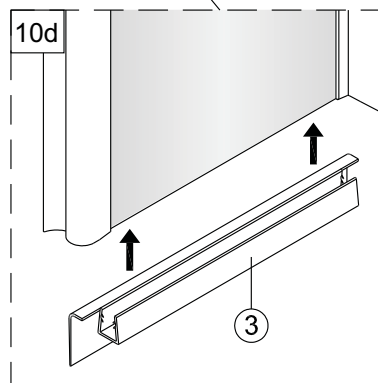
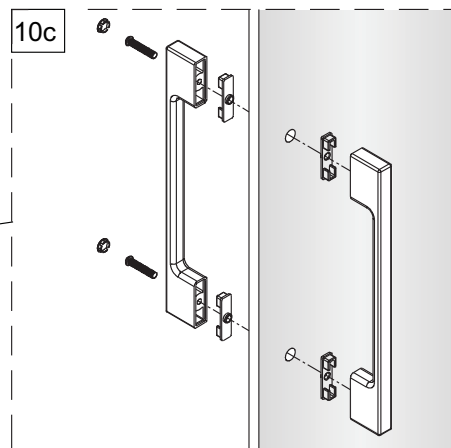
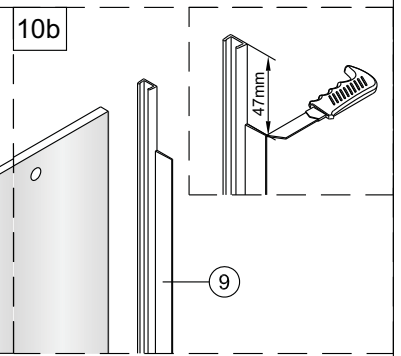
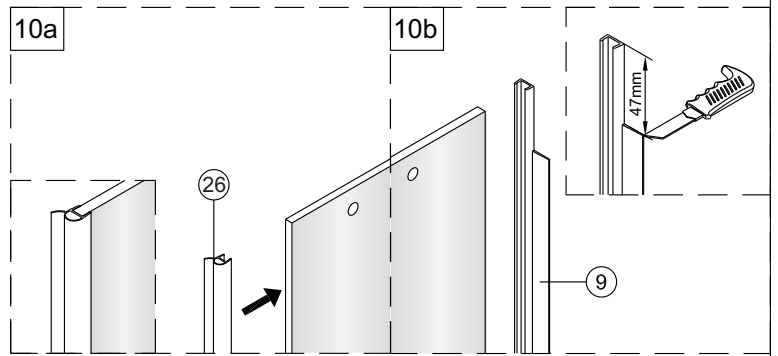
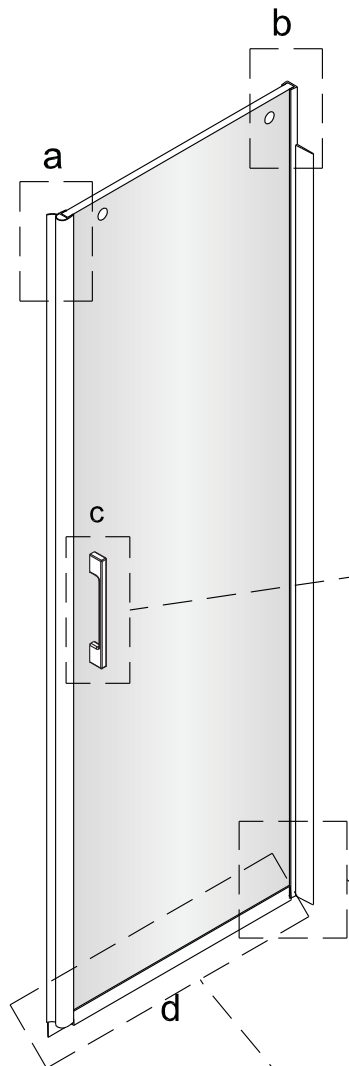
Step b: Insert the "Small" protector into the door guide when the moving glass does not use any bottom waterproof strip.

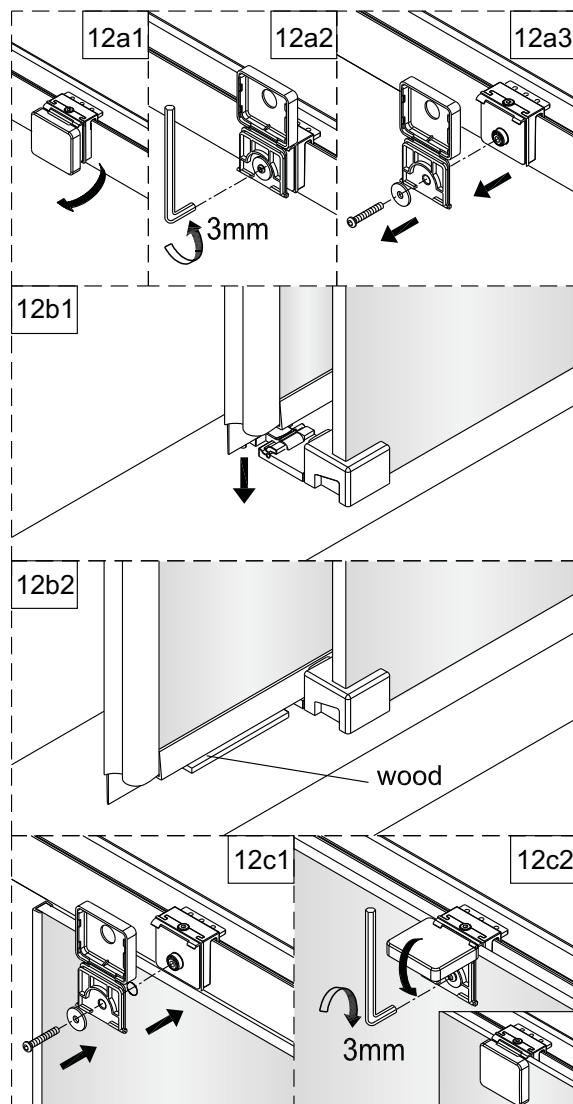
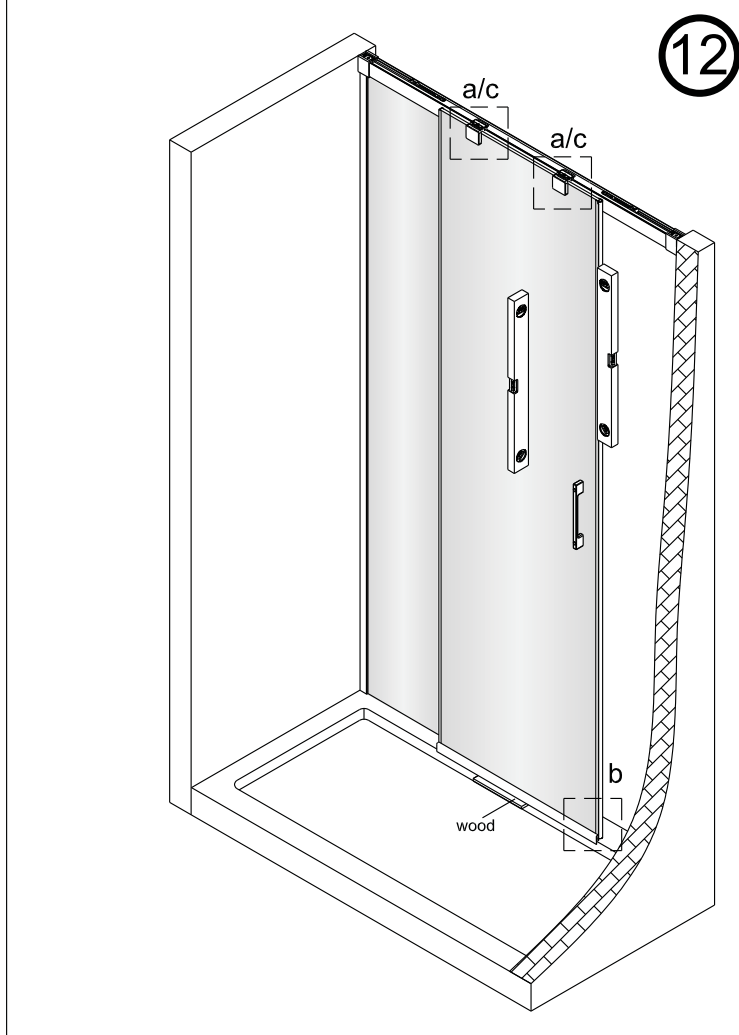
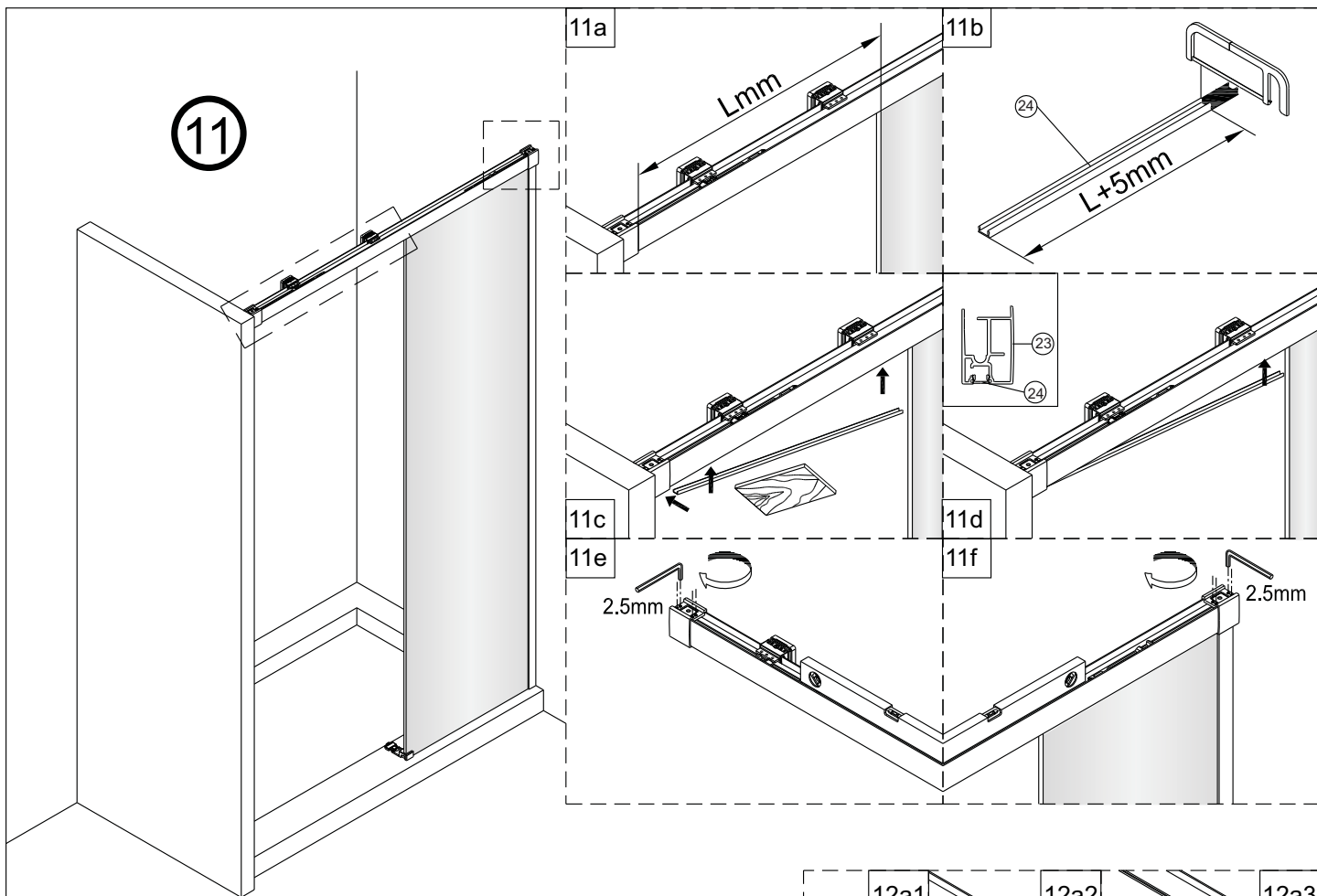


Cut the redundant part along the rim of glass.

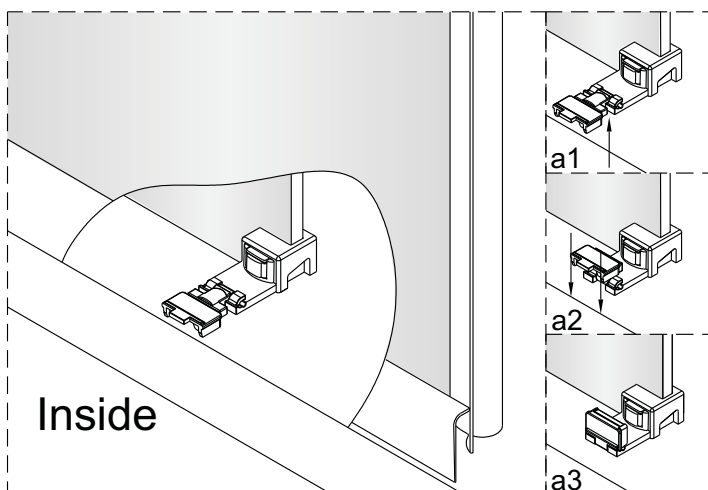
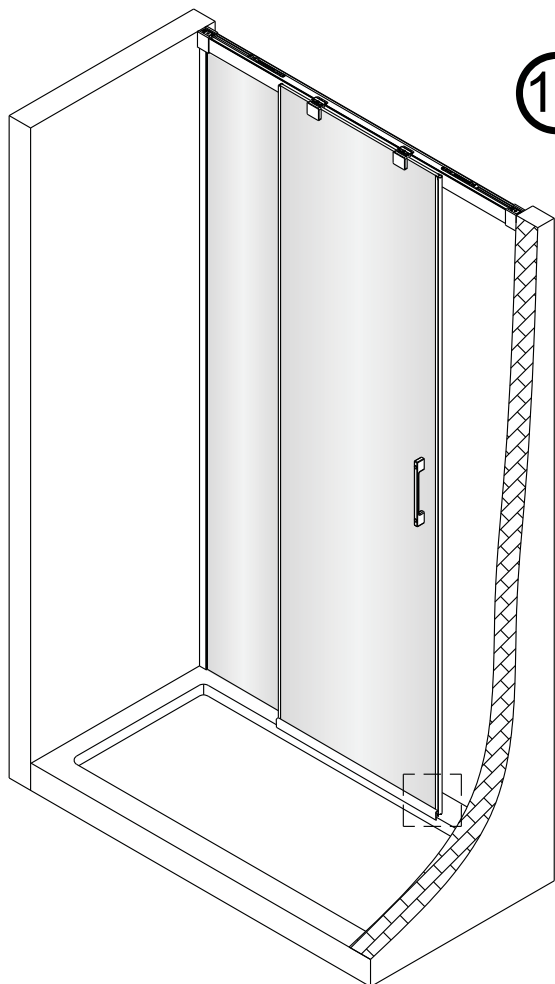


10

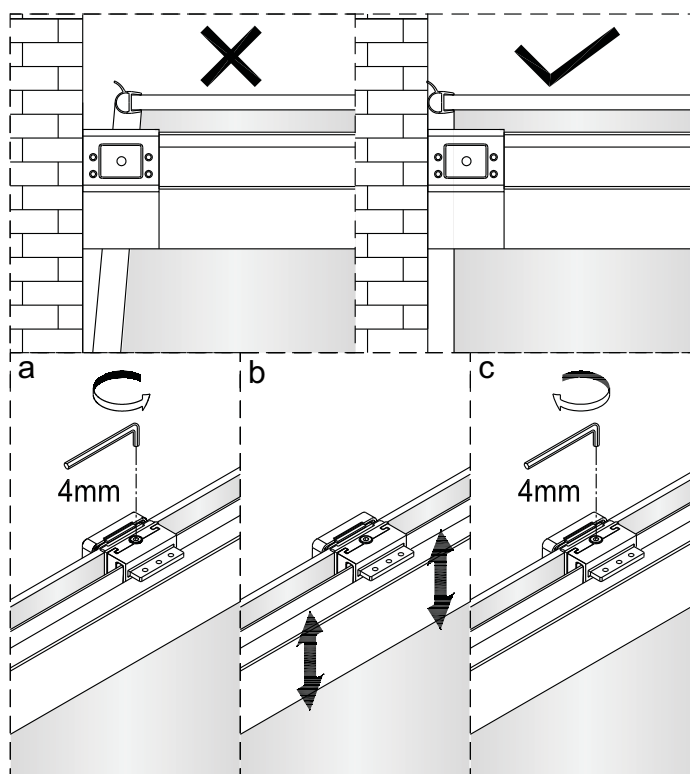
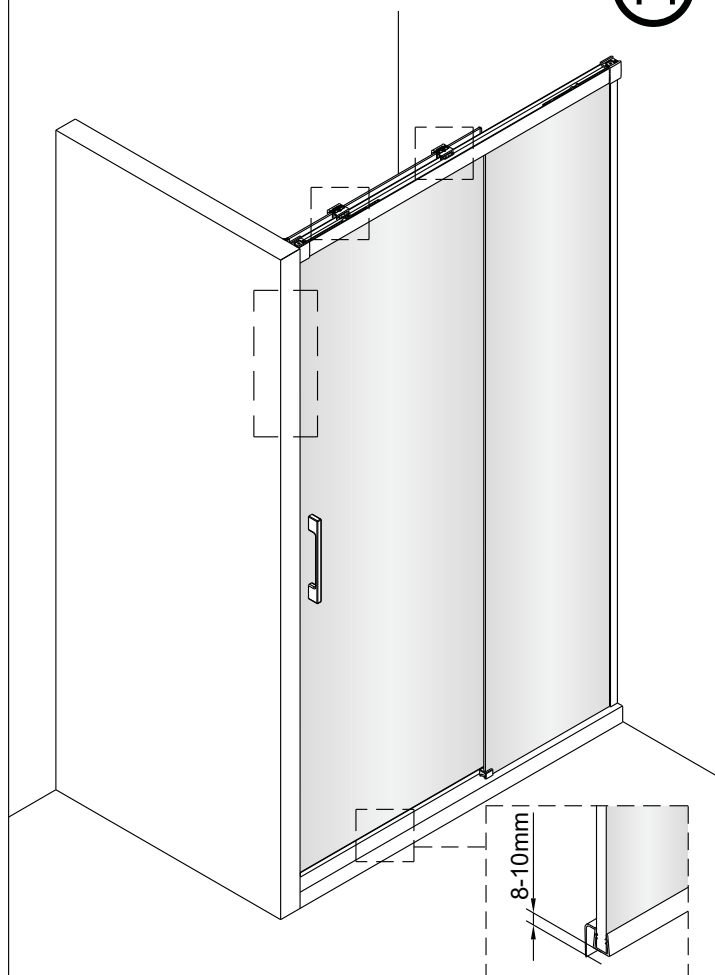




13



14



Adjust the moving door through the middle screw on moving door's roller: loosen the screw to make the moving door going up, tighten up the screw to make the moving door going down, meanwhile, please make sure there's 8-10mm gap between the bottom of moving door and the floor.

15



30mm

15a

15b

21

20

Caution: avoid this screw(21) falling into the track.



15c

16



Caution: avoid this screw(21) falling into the track.

16a

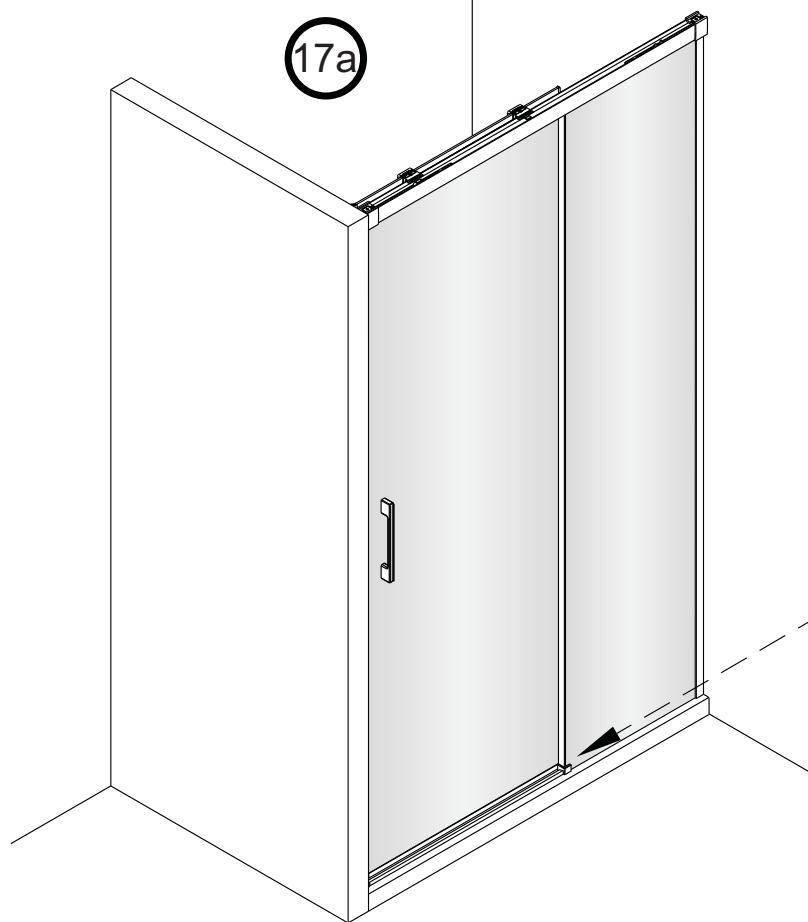
16b

21

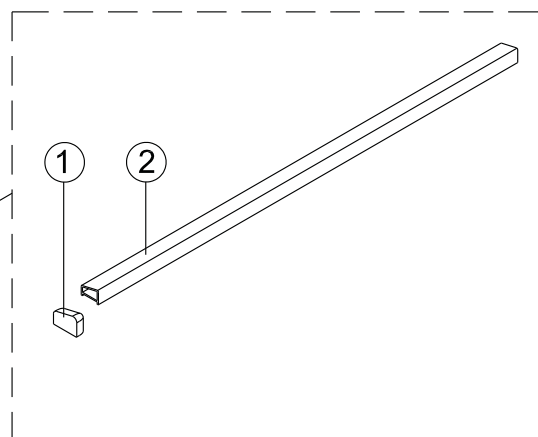
20

16c

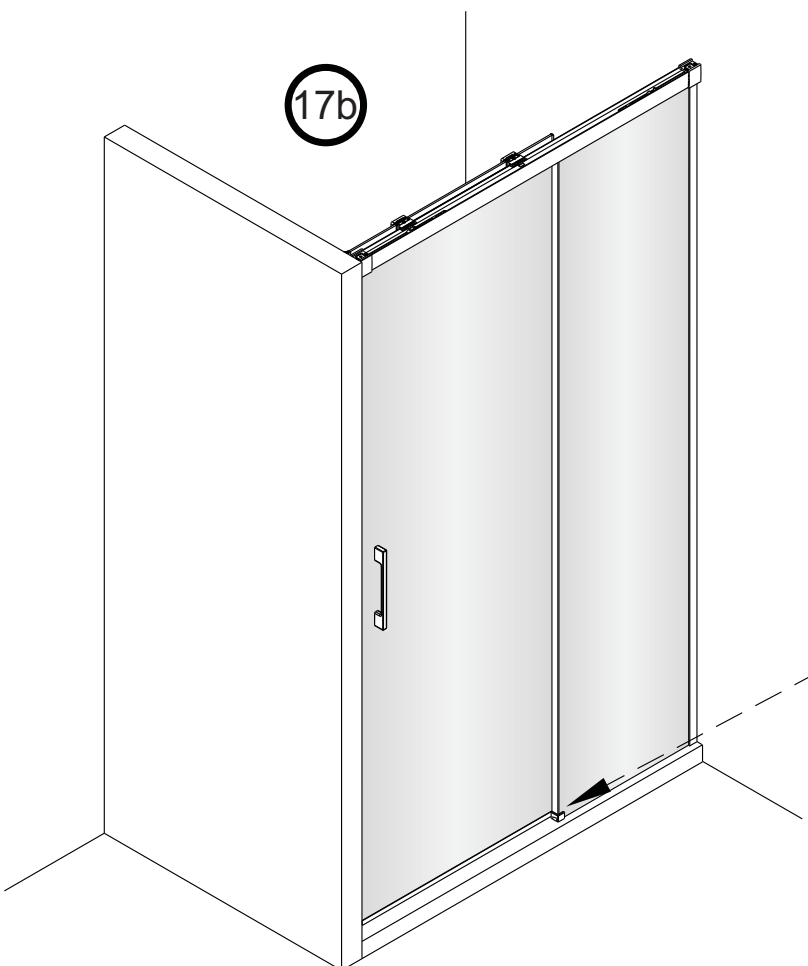
17a



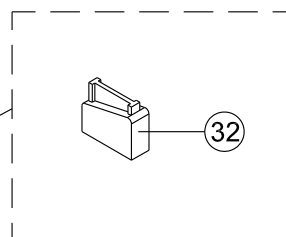
When bottom water barrier is needed for moving door, please see step 18a.



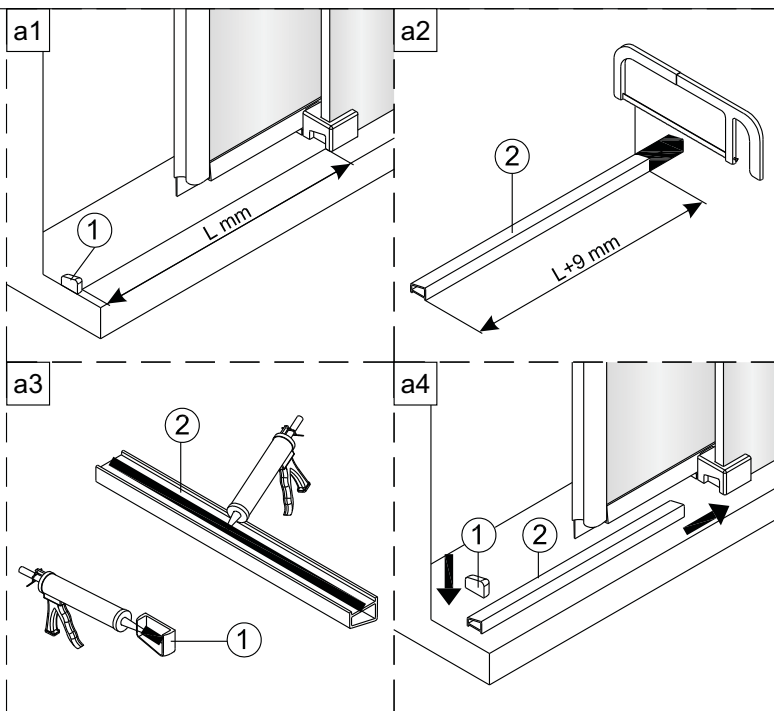
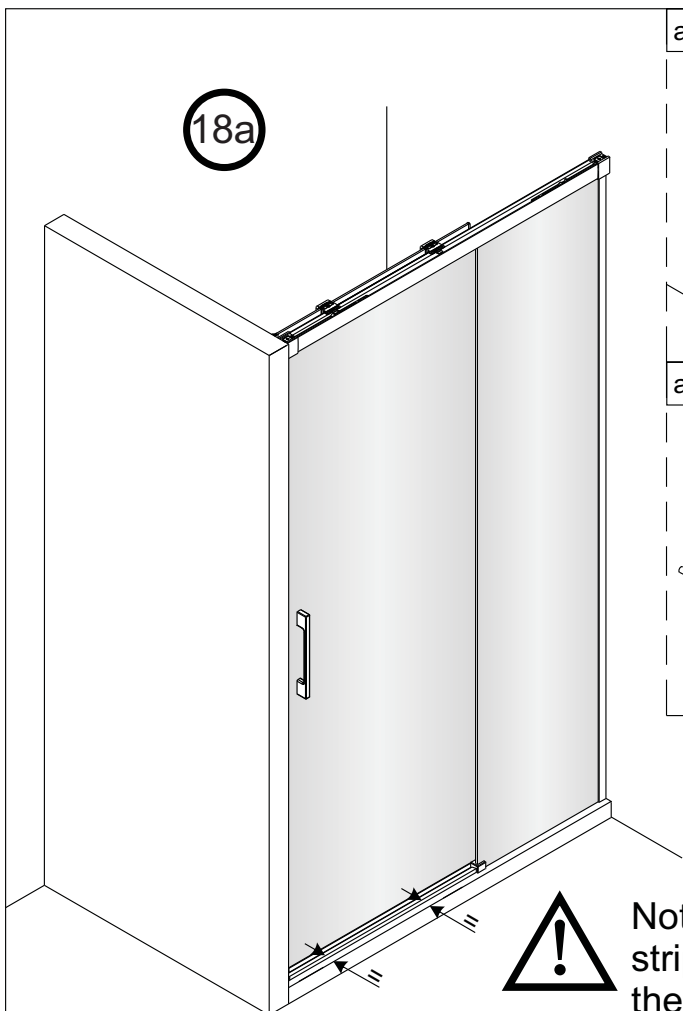
17b



When bottom water barrier is not needed for moving door, please see step 18b.

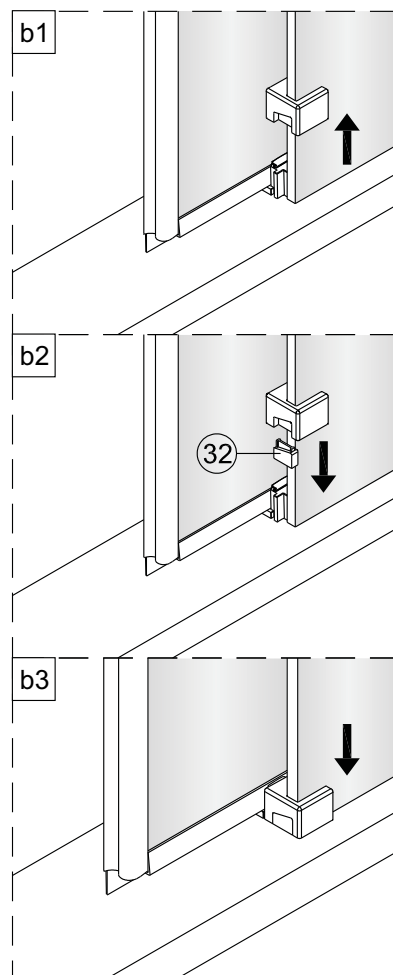
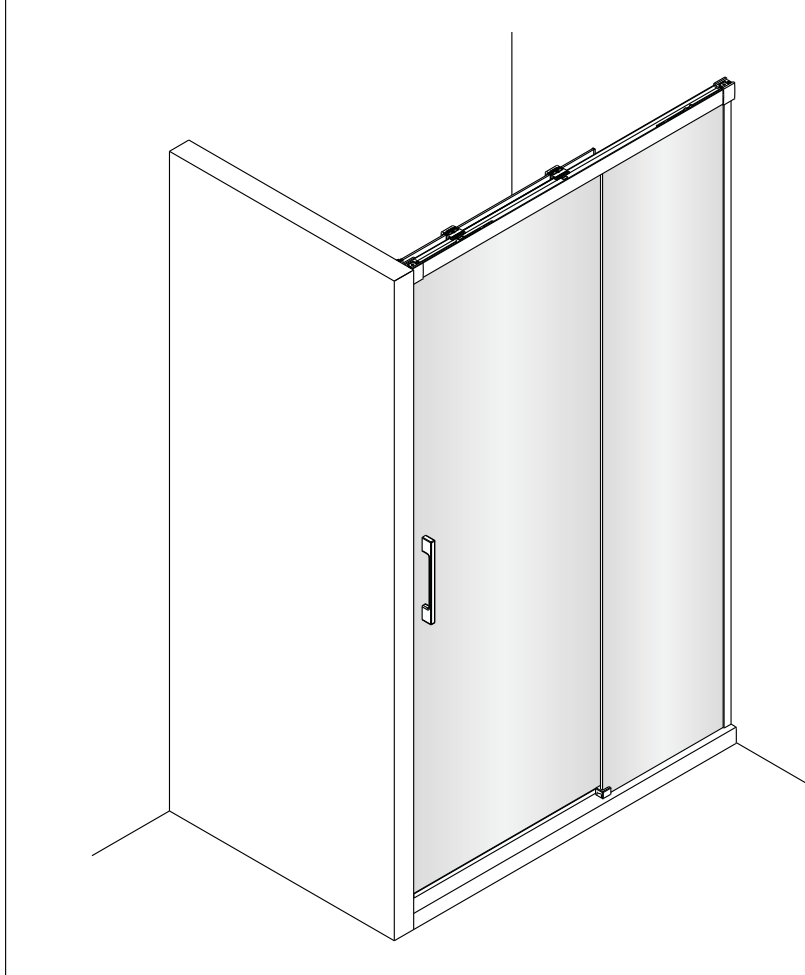


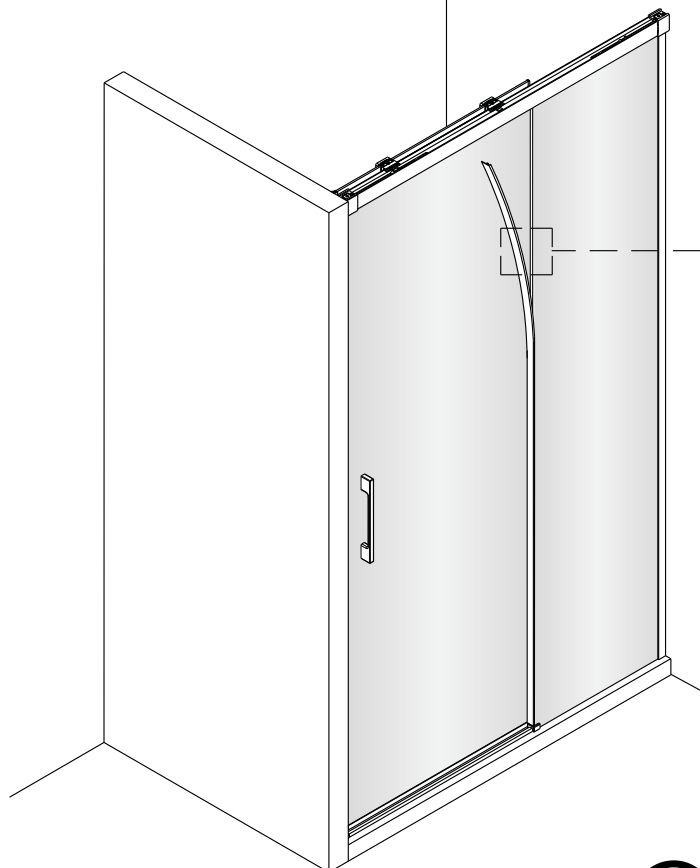
18a



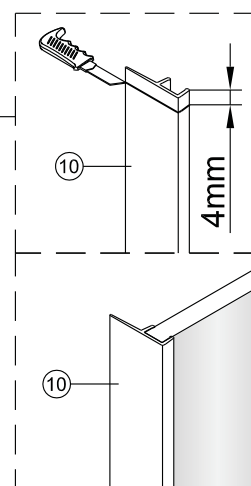
Note: the bottom waterproof strip here must parallel to the rim of shower tray.

18b





19



20

